

Kickoff Tile

| | | |
|-----------------------|---------------------------|----------------|
| Product Type | Carpet Tile | |
| Collection | Teamwork | |
| Style Number | 5T499 | |
| Construction | Multi-Level Pattern Loop | |
| Fibre | Ecosolution Q100™ Nylon | |
| Dye Method | 100% Solution Dyed | |
| Primary Backing | Synthetic | |
| Secondary Backing | Ecoworx® Tile | |
| Protective Treatments | SSP® Shaw Soil Protection | |
| | u.s. | metric |
| Product Size | 9 in x 36 in | 23 cm x 91 cm |
| Area Per Box | 45 ft² | 4.18 m² |
| Pieces Per Box | 20 pcs | |
| Gauge | 1/12 in | 47.2 per 10 cm |
| Stitches | 9.5 per in | 38.5 per 10 cm |
| Average Density | 5735 oz/yd³ | 0.212 g/cm³ |
| Kilotex | | 10.98 |
| Total Thickness | 0.247 in | 6.27 mm |
| Tufted Weight | 18 oz/yd² | 610.3 g/m² |



Recommended Installation Method



Data + Testing

| | |
|----------------------------|--|
| Radiant Panel (Astm E648) | Class I |
| Nbs Smoke | Less Than 450 |
| Electrostatic Propensity | Less Than 3.5 kv |
| Cri Green Label Plus (Glp) | GLP9968 |
| Pill Test | Pass* |
| Ada Compliance | >0.6, Meets the recommended static coefficient of friction for ADA walking surfaces and accessible routes*** |

Test Reports may be included or listed by the manufacturing/inventory style number as opposed to the noted selling style number.

Warranties

Lifetime Commercial Limited

Coordinating Products

Carpet Tile: **Collaboration Tile, Huddle Tile, Follow-Up Tile**

Attributes + Certifications

Certifications Below Apply Exclusively To The Carpet Tile Rug Itself And Not The Lokworx Tabs Adhesive

Health & Wellbeing

Material Ingredient Transparency

Cradle to Cradle Certified® | Silver Level (Version 4.0)
Health Product Declaration (HPD) | 1,000 ppm Disclosure
Living Building Challenge (LBC) | Free of Red List Chemicals
Declare | LBC Compliant
NSF 140 | Gold
CRI Green Label Plus (GLP) | GLP9968

Indoor Air Quality

Climate Impact

Environmental Product Declaration (EPD)
Embodied Carbon (Cradle to Gate)
Life-Cycle Carbon Emissions
Total Recycled Content
Product Packaging

3rd Party Certified in Accordance with ISO14044, ISO14025 & EN15804
4.61 kg CO₂/m²
Carbon Neutral
59% (Pre-Consumer 59% | Post-Consumer 0%)
100% Recyclable

Global Product Assessment

Singapore Green Label | Certified
CE Marking (EN 14041) | 3rd Party Certified
Environmental Guarantee* | Re[turn] Reclamation Program* | Through Our Environmental Guarantee, Shaw Pledges to Transport And Recycle Any Ecoworx Carpet.
Country of Origin | USA**

Green Leed Contribution Credit

MR Credit: Building Product Disclosure and Optimization
Environmental Product Declarations - Option 1: Environmental Product Declaration (EPD)
MR Credit: Building Product Disclosure and Optimization
Material Ingredients - Option 1: Material Ingredient Reporting
MR Credit: Building Product Disclosure and Optimization
Material Ingredients - Option 2: Material Ingredient Optimization
MR Credit: Building Product Disclosure and Optimization
Sourcing of Raw Materials - Option 2: Leadership Extraction Practices
EQ Credit: Low Emitting Materials
Option 1: Product Category Calculations
MR Credit: Interiors Life-Cycle Impact Reduction
Option 3: Design for Flexibility

3rd Party Certified in Accordance with ISO14044, ISO14025 & EN15804
C2C Silver Level (Version 4.0) or HPD (Version 2.1)
C2C Silver Level (Version 4.0)
Environmental Guarantee: Re[turn] Reclamation Program* | Through Our Environmental Guarantee, Shaw Pledges to Transport And Recycle Any Ecoworx Carpet.
Green Label Plus Certification: GLP9968
Ecoworx Tile with Lokdots Installation System

Available Colorways



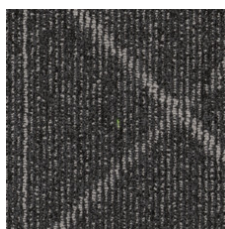
Impact 97100
LRV 23



High Impact 97111
LRV 19.6



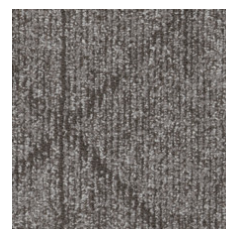
Contribute 97500
LRV 4.4



Innovate 97505
LRV 6.6



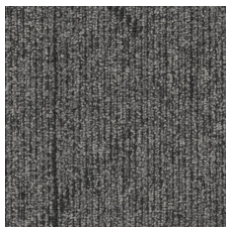
Progress 97515
LRV 24.5



Steady Progress 97518
LRV 18.1



Influence 97535
LRV 18.2



Influence Others 97555
LRV 12.1

Additional Information

* To learn more about the recyclability of our products and our re[TURN], please visit shawcontract.com/sustainability.

**Meets or exceeds all local and national regulations in country of manufacture.

***This carpet is manufactured to be ADA compliant, but to be fully ADA compliant, the end-user must ensure the carpet is adhered to the floor and installed as outlined in the ADA standards.

[Installation Guidelines](#)

[Maintenance Guidelines](#)

Specifications are subject to nominal manufacturing variance. Material supply and/or manufacturing processes may necessitate changes without notice.

This product is an exclusive design and may not be duplicated in any manner. Use of this design in the creation of another product design is also strictly prohibited.

Visit shawcontract.com/testing for more information.



PVC-Free

Corporate Headquarters +1 800 257 7429 | +1 706 532 7984 | Atlanta +1 404 853 7429 | Bengaluru +91 80 6773 0202 | Beijing +86 10 6568 588 | Chicago +1 312 467 1331 | Dubai +971 4 584 6956 | Hong Kong +852 2623 0371 | Latin America (Miami) +1 305 827 5912 | London +44 207 961 4120 | Los Angeles +1 800 233 1614 | Melbourne +61 3 9939 8543 | Mexico City +55 5010 7600 | Mumbai +91 22 6284 5050 | Nantong +86 400 800 7429 | New York +1 212 953 7429 | Paris +33 (0) 1 81 22 44 39 | San Francisco +1 415 955 1920 | Santiago +562 2431 5000 x 550 | São Paulo +55 11 3071 1702 | Shanghai +86 21 3338 4000 | Singapore +65 6733 1811 | Sydney +1 800 556 302